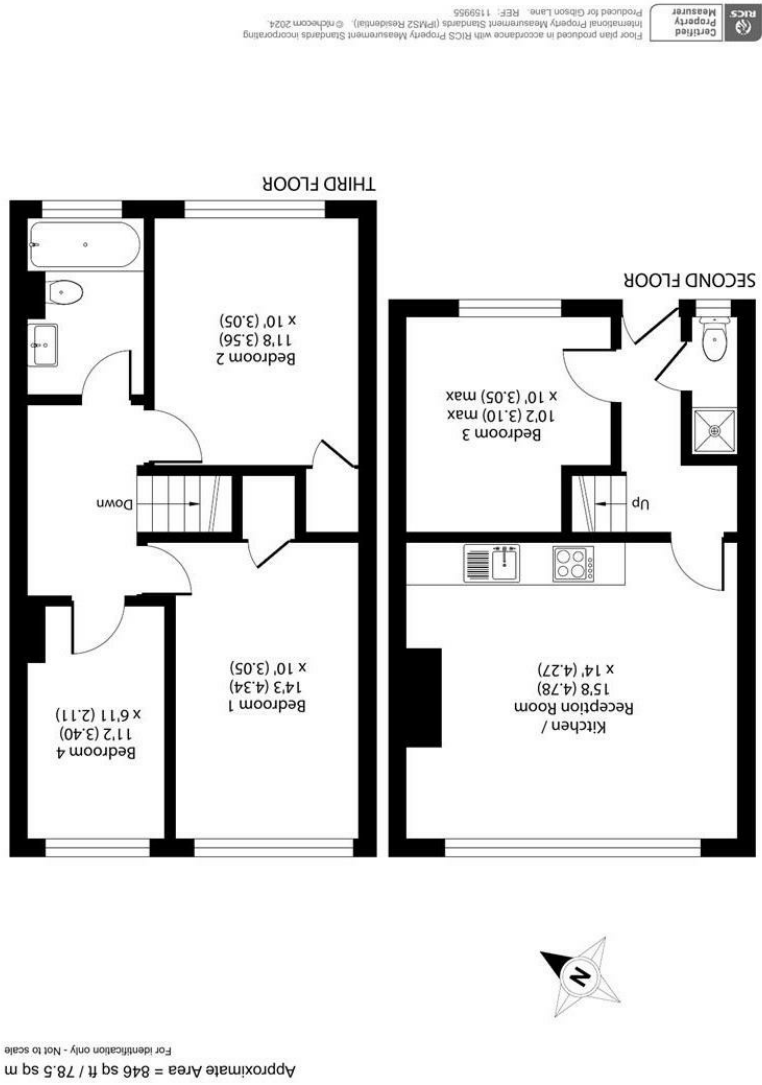
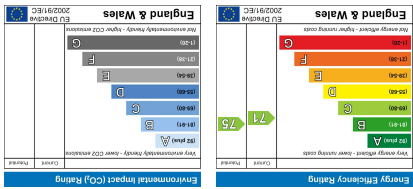


PROTECTED

PROTECTED

Important Information

All appliances listed in these details are only 'as seen' and have not been tested by Gibson Lane, nor have we sought certification of warranty or service, unless otherwise stated. Measurements, areas and distances are approximate. Floor plans and photographs are for guidance purposes only and must not be relied upon for any purpose. These details are offered on the understanding that all negotiations are made through this company. Neither these particulars, nor verbal representations, form part of any offer or contract, and their accuracy cannot be guaranteed.



gibson lane

34 Richmond Road
Kingston upon Thames
Surrey
KT2 5ED
www.gibsonlane.co.uk
Tel: 020 8546 5444





- AVAILABLE 28th JULY 2025
- Split Level Flat
- First Floor
- 2 Double Bedrooms
- 2 Single Bedrooms
- Open-Plan Kitchen/Living Room
- Tiled Bathroom With Bath & Shower
- Ideal For Students @ Roehampton University
- EPC Rating - C
- Council Tax Band - C



£2,250 Per Calendar Month

Sherfield Gardens,
Roehampton,
London,
SW15 4PR



Description:

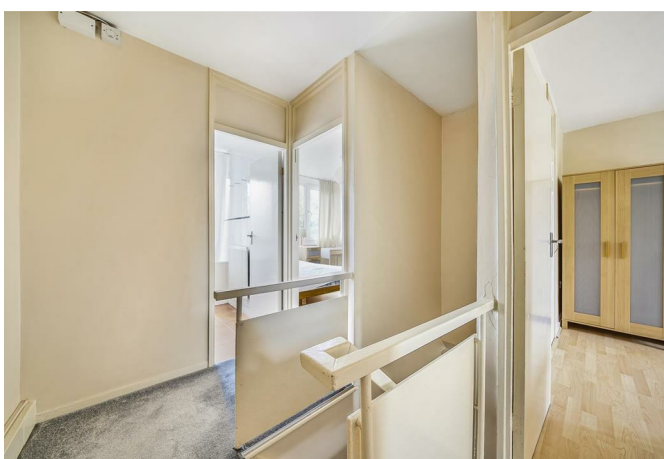
AVAILABLE 28th JULY 2025

This spacious and modern 4 bedroom property presents the perfect living environment for students. It comes fully furnished with desks throughout and is within walking distance of local amenities and Whitelands College. The property further benefits from being close to local bus routes into Central London.

- 2 Double Bedrooms
- 2 Single Bedrooms
- Open Plan Kitchen
- 2 Bathrooms
- 2 Showers
- 1 Bath
- 2 Toilets
- Fully Furnished
- Professionally Managed
- EPC Rating - C
- Council Tax Band - C

Location:

Sherfield Gardens is located just a short walk from the ever popular Richmond Park. The location is well served with many different transport links which include buses to Putney, Hammersmith and Kingston, the A3 is in very close by which provides quick access in and out of London. Close to various Universities and Queen Mary's Hospital.



Furnishing: Furnished
Local Authority: Wandsworth
Council Tax Band: C
Available Date: 28th July 2025
Deposit: £2,596
Tenancy Term: Long Term